

## Spotlight on Government Work and Legislative Issues

### Gillibrand's work in Congress helps secure West Brook funding

At the end of February, the LGA received word that the **West Brook Conservation Initiative** was in line to receive substantial funding from the federal government.

The funding was the result of an appropriations request submitted (and resubmitted) over a 3-year period by U.S. Senator **Kirsten Gillibrand**, during her time in the House of Representatives.

The West Brook project will receive \$764,000 through the Omnibus Appropriations Act, 2009 (H.R.1105). The project appears in the bill as a Congressionally-designated Watershed and Flood Prevention Operations project under the Natural Conservation Resource Service.

According to Walt Lender, LGA Executive Director, the money can only be used for environmental remediation aspects of the project.

"Of course, we are thrilled to receive this funding and we want to thank Sen. Gillibrand for her unwavering faith in this project," said Lender. "At the same time, we still have a big fundraising job ahead of us to pay for the acquisition of the property."

The West Brook project has also received funding commitments from New York State through the Departments of State,

Environmental Conservation, Transportation and the Office of Parks, Recreation and Historic Preservation.

Like the federal funding, these dollars are restricted to specific aspects of the project. A majority of the grants that have been awarded and received are limited to the design, engineering and construction of the stormwater related infrastructure. Other awards will help to create a park-like setting throughout the site.

We are still trying to reach the 3 E's commitment to raising 2.1 million dollars for the property acquisition. At this time, we are moving ahead with a capital campaign to raise over 1 million dollars to help fulfill that goal. ♦



*U.S. Senator Kirsten Gillibrand has been a strong supporter of the West Brook Conservation Initiative.*

### Invasive Species getting attention of State's leaders in Albany

Something is bugging Legislators and State Agency representatives. That something is invasive species.

The LGA has been working hard to make sure our friends and partners in Albany hear our message: "Invasive species represent a statewide problem with statewide ramifications and, therefore, requires a statewide response."

Here's a review of some of the work that has been done by the LGA on the "big picture" level:

**TNC's "Invasive Species Day" in Albany**

On February 9, 2009, the LGA participated in "Invasive Species Day" in Albany, which is organized by The Nature Conservancy (TNC). This is the 4th year that TNC has done



*Asian Longhorned Beetle has devastated tree populations in parts of New York City and Worcester, Mass.*

this event, and the LGA has taken part in all of them.

Over 20 individuals, representing a variety of stakeholder groups, met with more than 50 legislators in Albany to discuss funding for Invasive Species in the Environmental Protection Fund (EPF).

Originally, the Invasive Species line in the EPF was for \$5 million for the current fiscal year and Fiscal Year 09-10. However, Gov. Paterson's Deficit Reduction Bill (DRB) for current year lowered

that number to \$3.5 million and his FY09-10 budget proposed lowering Invasives down to \$1.5 million.

*Invasive Species cont'd on Page 3*

# LGA comments on LGPC Stream Corridor Protection Regulations

Over the past several months, the Lake George Park Commission has gone through the process of bringing forward new regulations to protect stream corridors. Draft regulations were put out for public comment and the community responded in large numbers. Drafts of the regulations and a Generic Environmental Impact Statement can be found on the Park Commission's website at [www.lgpc.state.ny.us](http://www.lgpc.state.ny.us).

Reaction was split. Some feel the draft regulations are too strict; some feel they do not go far enough. The draft proposes a protective buffer that extends 100' from each bank of all designated streams within the Lake George watershed. Any disturbance within that zone would require a variance from the Park Commission.

As it stands, there are many important questions that are unanswered. The LGPC has postponed action until May.

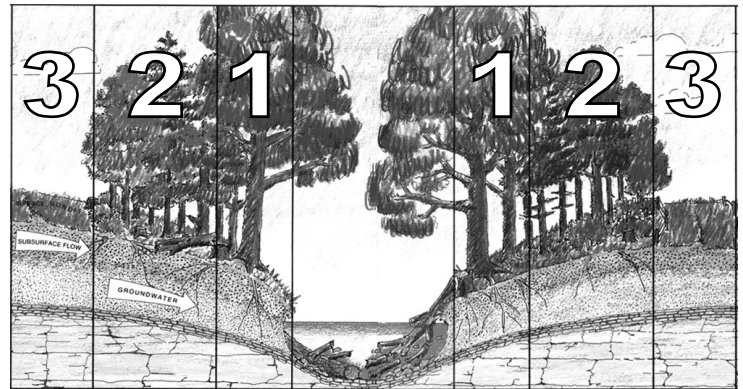
In reviewing the Park Commission's draft, as well as considering the public comments, the LGA staff has attempted to provide recommendations to improve these necessary regulations while addressing many of the questions and concerns.

**"The LGA's Recommendation for a Stream Buffer Program to Protect Lake George"** was drafted by Emily DeBolt and is available from the LGA. The document's introduction explains the LGA's goals.

"The LGA did an extensive literature review on stream buffer research and policy. We combined that with what we know about Lake George's water quality and surrounding land use. Then we tried to balance environmental protection with the cultural and political realities of our area. The result is a recommended buffer program we feel is a realistic attempt at creating regulations that will be both fair and effective."

The LGA's recommendations call for a "3 Zone" system within each stream corridor based on model ordinances endorsed by the EPA and the USDA Forest Service.

The zones, extending out from the banks of the stream, would consist of a Streamside zone, a Middle zone, and an Outer zone.



Disturbance and cutting restrictions, as well as recommended vegetative buffer coverage, would change for each zone, with the Streamside zone providing the greatest protection measures.

The buffer widths for each zone would also vary, according to the LGA's recommendations. The LGPC proposal calls for a uniform buffer width of 100 feet out from both banks.

The LGA document defines 8 large sub-watersheds that should receive consideration for strong protection measures, as they supply 2/3 of the stream flow to the lake: West Brook, East Brook, English Brook, Finkle Brook, Hague Brook, Indian Brook, Northwest Bay Brook, and Shelving Rock Brook.

-- Zone 1, Streamside Zone. 25 feet wide

-- Zone 2, Middle Zone. 50 feet wide

-- Zone 3, Outer Zone. 25 feet wide

The set-back for buildings and septic systems is 100 feet from the edge of a stream bank.

There is a 25 foot no-cut zone that is Zone 1, the Streamside Zone. Cutting is only allowed from 25-75 feet from the stream (Zones 2 and 3) by permit.

All other stream corridors would follow similar guidelines, except the Zone 2, Middle Zone would only be 25 feet. Reducing the setback and no-cut zone by 25 feet. ♦

## Contact Information for our Elected Representatives

### Federal Government

Senator Kirsten Gillibrand (D-NY)  
531 Dirksen Senate Office Building  
Washington, DC 20510  
Phone: 202-224-4451  
[www.gillibrand.senate.gov](http://www.gillibrand.senate.gov)

Senator Charles Schumer (D-NY)  
313 Hart Senate Office Building  
Washington, D.C. 20510  
Phone: 202-224-6542  
[www.schumer.senate.gov](http://www.schumer.senate.gov)

Congressman Scott Murphy (D-NY 20th Dist.)  
120 Cannon HOB  
Washington, D.C. 20515  
Phone: (202) 225-5614  
[scottmurphy.house.gov](http://scottmurphy.house.gov)

### State Government

Governor David A. Paterson  
Executive Chamber, State Capitol  
Albany, NY 12224  
Phone: (518) 474-8390  
[www.ny.gov/governor/](http://www.ny.gov/governor/)

Senator Elizabeth Little (R-45th)  
903 Legislative Office Building  
Albany, NY 12247  
Phone: (518) 455-2811  
District Office:  
5 Warren Street  
Glens Falls, NY 12801  
Phone: (518) 743-0968  
E-mail: [little@senate.state.ny.us](mailto:little@senate.state.ny.us)

Assemblywoman Teresa Sayward (R-113th)  
(Warren, Essex, and parts of Clinton & Franklin Counties)  
940 Legislative Office Building  
Albany, NY 12248  
Phone: (518) 455-5565  
District Office:  
21 Bay Street  
Glens Falls, NY 12801  
Phone: (518) 792-4546  
E-mail: [sayward@assembly.state.ny.us](mailto:sayward@assembly.state.ny.us)

Assemblyman Tony Jordan (R- 112th)  
(Washington County and part of Saratoga County)  
725 Legislative Office Building  
Albany, NY 12248  
Phone: (518) 455-5404  
[jordant@assembly.state.ny.us](mailto:jordant@assembly.state.ny.us)

## *Invasive Species cont'd from Front Cover*

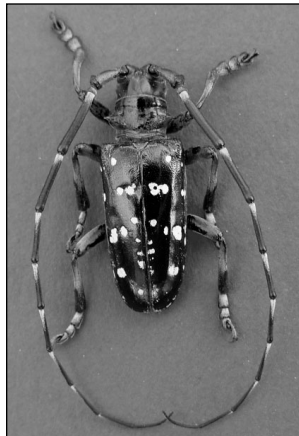
Invasives Day participants urged legislators to push for restoration of the Invasive Species line to \$5 million. The bottom line message: "\$1.5 million is simply unacceptable and will effectively stop all invasive species work on the statewide level, and at the regional level as well."

With the help of the Legislature, the Invasive Species line in the DRB was raised to \$4 million. We are happy to report that FY09-10 has Invasive Species back up to \$5 million.

### **DEC on Firewood Regulations**

In February of 2009, the LGA submitted a letter supporting the DEC's proposal to make its emergency firewood regulations permanent.

There is great concern around the state about invasive pests, Emerald Ash Borer and Asian Long-horned Beetle, which have had devastating impacts on tree populations in nearby areas like New York City and Worcester, Massachusetts.



*The Emerald Ash Borer has made a slow, but steady march from the Upper Peninsula of Michigan to Ohio, Pennsylvania and Quebec.*

These pests could be easily transported into and throughout the state by visiting campers bringing their own firewood. The DEC regulations could help prevent such an introduction.

### **Joint meeting of Canal Corp and LCBP**


Last fall, LGA staff members attended a meeting hosted by NYS Canal Corp and the Lake Champlain Basin Program (LCBP), which focused on the State's canal system as a primary vector in the spread of invasive species.

The Champlain Canal allows boaters traveling the Hudson River to reach Lake Champlain, which is already heavily impacted by invasive species. It has been determined that

Asian Clam has already become established in the Canal. Chinese Mitten Crab and Spiny Waterflea represent a real threat to Lake Champlain.

Several options were discussed to prevent invasives from moving from the Canal to Lake Champlain, including physical, chemical and electrical barriers.

**DON'T MOVE FIREWOOD!**



**This guy doesn't need a free ride!**


**DEC Firewood Regulation**

- Bans importing firewood into New York unless it has been treated (kiln-dried) to eliminate pests.
- Prohibits the movement of untreated firewood with New York more than 50 miles from its source.

**What you can do to help:**

- Leave firewood at home. Do not transport it to campgrounds or parks.
- Only buy firewood that has been harvested locally or treated for pests.
- Burn all firewood brought to the campsite.

For more information, go online to [www.dec.ny.gov](http://www.dec.ny.gov) (search: "firewood").



The LGA encouraged continued dialogue on this subject and stressed the need for development of a comprehensive plan that would incorporate a strong education and outreach effort, as well as the possible implementation of paid stewards at the public launches.

### **NYISAC activities**

The second meeting of the NY Invasive Species Advisory Committee (NYISAC) was held on March 4, 2009. James Hood, the LGA Communications Coordinator, represents the NY State Federation of Lake Associations (NYSFOLA) on the committee and is the committee chair.

A working group of the ISAC is also looking into developing basic concepts for a bill to make it illegal to transport invasive aquatics from one body of water to another.

In addition to working with the ISAC on this proposal, the LGA is working with the

Adirondack Park Invasive Plant Program and with local Assemblywoman Teresa Sayward, who has been a strong supporter of the creation of such a bill. ♦



*Luckily, this boat did not come out of Lake George.*

# DEC proposes new legislation to decrease impacts of phosphorus

New York State Department of Environmental Conservation has introduced a departmental legislative bill with the purpose of “limit(ing) the amount of phosphorus in dishwashing detergent, and limit(ing) the use of lawn fertilizer containing phosphorus, to reduce phosphorus discharges into waterbodies.”

Phosphorus has a significant impact on water quality. Excessive levels of phosphorus in water bodies causes algae blooms and increased growth of nuisance weeds. This can lead to reduced levels of dissolved oxygen in the water. According to the DEC bill, “just one pound of phosphorus has the capacity to grow from 500 to 700 pounds of algae.”

Phosphorus can enter a body of water through wastewater treatments plants, failing septic systems and stormwater runoff.

Many fertilizers contain high amounts of phosphorus. When applied in excess to yards and farm fields, fertilizer can be washed into tributary streams by rain storms.

For several years, groups like the LGA and the Lake Champlain Basin Program have promoted the judicious use of low- or no-phosphorus fertilizers, only if necessary as determined by a soil sample analysis. Cornell Cooperative Extension will analyze phosphorus levels in soil samples for just \$15.

The LGA has also done extensive outreach to area garden centers to encourage them to carry low- and no-phosphorus fertilizers. A list of area retailers who carry phosphorus-free

fertilizers can be found on the LGA’s website at [www.lakegeorgeassociation.org/html/p-free\\_retailers.htm](http://www.lakegeorgeassociation.org/html/p-free_retailers.htm).

The bill proposed by DEC has 3 components. The first part prohibits the “sale or distribution of household cleansing products used in dishwashers which contain more than 0.5% by weight of phosphorus compound and to prohibit the use of such products in commercial establishments as of July 1, 2010”

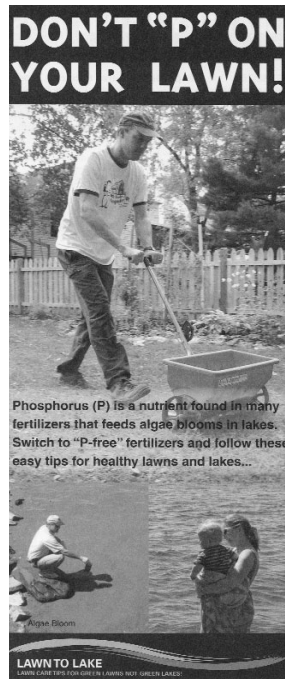
The second part prohibits the use of phosphorus fertilizer on lawn or non-agricultural turf, “except when: (1) a soil test demonstrates that additional phosphorus is needed for lawn or non-agricultural turf growth, or (2) new lawn or non-agricultural turf is being established.”

The third part would require retail stores to display fertilizer products with higher levels of phosphorus separately and with signage posted stating that phosphorus runoff is a threat to water quality and should only be used in accordance with the exceptions listed in the above-mentioned “second part.”

As of the writing of this article, the bill is being debated in committee in the State Legislature. There are several concerns and questions surrounding parts of this bill.

Whatever the outcome, the LGA is pleased that the DEC has decided to make the reduction of phosphorus levels in our water bodies a priority.

In the meantime, the LGA continues promote voluntary compliance by residents and businesses. ♦



---

## Adirondack Park Agency puts revised shoreline regulations into effect

The Adirondack Park Agency (APA) has reported that revised regulations regarding shoreline structures in the Park went into effect on December 31, 2008. The revised rules regulate the expansion of structures located within the shoreline setback area (50 feet measured horizontally from the mean high water mark in most locations around Lake George.)

According to an APA press release, “The regulation was developed based in part on technical data that proves the placement of structures close to shorelines can significantly accelerate erosion and sedimentation into water bodies. This results in negative impacts on water quality.”

The new regulations state that an existing structure located within the shoreline setback area may not be expanded in any direction within the setback, including increase of structure height, without a variance. There are exceptions for “Minor” rearward expansion or “Minor” height expansion.

“Minor” rearward expansion is defined as not more than 250 sq feet of floor space. Floor space is defined as the exterior measurement and the total of all floors. “Minor” height expansion is defined as not more than 2 feet.

Previous regulations allowed expansion within the setback area to occur without a variance in all directions except toward shoreline. Expansion of structure outside the setback area can still occur with no APA variance.

“When combined with inadequate on-site wastewater treatment systems, structure expansions increase the potential for public health risks and further degrade water quality,” according to an APA press release. “This new regulation requires evaluation of the on-site wastewater treatment system before an expansion of a non-conforming structure is allowed.”

The new regulations apply prospectively and any previously-issued jurisdictional determination will be honored by the APA. If all local project approvals were obtained prior to December 31, 2008 and the foundation of the structure is completed on or before June 30, 2009, the expansion of the structure within the shoreline setback area is subject to the previous regulations.

The most prudent action to take if planning any alterations to a structure near the lake shore would be to contact APA staff and submit a jurisdictional inquiry form, which is available for download on the APA website at [www.apa.state.ny.us](http://www.apa.state.ny.us). ♦

# LGA SUMMER OUTREACH SCHEDULE

- ◆ May 15 Lake George Turtle Monitoring Project (LGTMP) continuing volunteer refresher 5-6 pm @ LGA, new volunteer training: 6-8 pm at LGA office. Advance registration required.
- ◆ June 3 Citizen Statewide Lake Assessment Program (CSLAP). 5-6:30 pm refresher for continuing volunteers @ LGA
- ◆ June 3 Lake George Water Quality Talk with Scott Kishbaugh, NYSDEC, 7 pm @ LGA.
- ◆ June 4 Lake George Inspirations Summer Talk Series: In Stoddard's Footsteps with Mark Bowie, 7 pm @ the LGA office.
- ◆ June 13 LGA Annual Meeting, 8:30 am registration, coffee & refreshments, 9 am meeting @ the Lake George Club.
- ◆ June 20 Turtles of Lake George Talk. Dee Strnisa, NYSDEC, @ LGA, 10 am. No registration required.
- ◆ July 1 Build your own Rain Barrel workshop at LGA, 5:30 pm. Advance registration required. Cost: \$55 for members, \$65 for non-members.
- ◆ July 2 Lake George Inspirations Summer Talk Series: Lake George ~ Inspiring the Writer's Life with Nancy Scarzello. 7 pm at the LGA office.
- ◆ July 9 Book Release Party for Carl Heilman's new Lake George photography book. Island BBQ Dinner on Canoe Island at 6 pm. Boats leave for island starting at 5:15. Program and book signing at 7:30 pm in the Tyrolean Room at Canoe Island Lodge. Dinner is \$29.95 for adults and \$15 for children. Dinner includes a boat ride out to Canoe Island, and a BBQ with chicken, ribs, corn on the cob and more! Includes tax and gratuity.)
- ◆ July 10 Family Program: Aquatic Invaders. 10-11 am at Shepard Park in the Village of Lake George.
- ◆ July 15 Volunteer Stream Clean Up Event, meet at Bolton Landing Town Hall at 9:30 am. Stream location TBA.
- ◆ July 17 LGA Summer Splash, the Inn at Erlowest, 6:30 pm (advance reservations required)
- ◆ July 24 Family Program: Lake George Food Web. 10-11 am at Rogers Park in Bolton Landing.
- ◆ August 5 Build your own Rain Barrel Workshop. 5:30 pm at the Hague Community Center. cost \$55 for LGA members, \$65 for non-members.
- ◆ August 6 Lake George Inspirations Summer Talk Series: Speaker TBA. 7 pm at the LGA office.
- ◆ August 7 Family Program: Lake George Food Web. 10-11 am at Shepard Park, Village of Lake George.
- ◆ August 21 Family Program: Creek Critters. 10-11 am at Lake George Recreation Center.
- ◆ August 26 Volunteer Stream Clean Up Event. meet at LGA office at 9:30 am. Stream location TBA.
- ◆ Sept 3 Lake George Inspirations Summer Talk Series: A Lofty Work of Art ~ Lake George in Painting and in Print (1774-1900) with Erin Coe, the Hyde Collection. 7 pm at the LGA office.

## **These are some other events that LGA is involved in coming up this summer as well.**

- ◆ May 16: Crandall Park Discovery Event, 10-3, @ Crandall Park, Queensbury. Stop by the LGA Macro sampling station on Halfway Brook.
- ◆ May 26: Lake George Watershed Coalition 5th Annual Forum on Water Quality & Resource Conservation, Roaring Brook Conference Center, LG, 8:15 am coffee and registration, 9 am - 4:45 pm, price includes refreshments and lunch.
- ◆ May 29: Lake George Fishing Alliance Kids Fishing Clinic, Usher Park, Lake George 6-8 pm, free and open to the public.
- ◆ July 5-11: 3rd Annual Adirondack Park Invasive Species Awareness Week, various events all week. More details to follow.
- ◆ July 18: Annual Loon Census 8-9 am.
- ◆ July 25: Waterfest 10 am-4 pm @ Bicentennial Park, Ticonderoga. Stop by the LGA table in the big tent or come down to Mossy Point Boat. Launch for a boat ride on the new Floating Classroom at Noon and again at 2 pm. Free and open to the public.

# The LGA “Summer Splash” Gala is July 17th and We Need Your Help!

## LGA seeking donations for live and silent auctions

The LGA gala is our largest fundraiser of the year. If you have a unique item or service to donate, please contact Cheryl Lamb, the Event Committee Chair, or contact Nancy Cobb-Zoll, the LGA’s Director of Membership Development at 518-668-3558 or by email at [ncobb-zoll@lakegeorgeassociation.org](mailto:ncobb-zoll@lakegeorgeassociation.org).

**Here are some donation ideas to get you started:**

### Tickets for Sporting Events or Concerts

Tickets to football, baseball, basketball, and hockey games are always a big hit. Consider tickets to the theater, ballet, symphony or a lecture series. How about a season pass to a museum that you enjoy?

### Vacation Homes

Do you have a vacation home? Do you know anyone with a vacation home? Consider donating a weekend or more!



### Share your Talent/Hobby

Donate a piece of art, a quilt, jewelry, a hand-sewn item, scrapbook items, food, photography, or host a party/lesson.

### Lessons

Music, foreign language, yoga, ski, cooking, golf and dance are some examples to consider.

### Share an Experience

Invite a group to join you on a sailing, fishing, skiing or camping trip, etc.

### Professional Services

Landscape design consultation, architectural consultation, massage therapy, skin care, graphic design services, snow removal, leaf removal.



### Donation Fund

If it is easier for you to donate cash, consider writing a check to our donor pool. This money will be used by the Auction Committee to buy additional items needed to complete or enhance auction packages.

*Your generosity and efforts are greatly appreciated and will benefit the LGA’s Lake Saving Projects and educational initiatives.*

## “Table tents” raise lake awareness in area hotels and restaurants

### LGA offers table tents free to area businesses

The LGA’s popular “*Lake George is drinking water*” campaign will now be broadcasting its lake awareness message at area businesses. The LGA has produced 5,000 “table tents” and will be making them available to hotels and restaurants free of charge.

The goal is to make visitors aware that Lake George is the drinking water source for the majority of people around the lake. It is also the drinking water source for the hotel where they are staying and the restaurant where they are eating and drinking.

The “Lake in a bottle” design is the work of **Terri Jamison**, a Lake George graphic artist with her own business: **Documents and Designs**. ([www.documentsanddesigns.com](http://www.documentsanddesigns.com)) Terri volunteered her services to develop the campaign.

To find out how you can get table tents for your business, please contact the LGA office at (518) 668-3558 or email: [info@lakegeorgeassociation.org](mailto:info@lakegeorgeassociation.org). ♦



# LGA looking for volunteers to become Citizen Scientists!!

## Be a Turtle Monitor!

This summer will be the third year of the **Lake George Turtle Monitoring Program**. Our first two summers have been a great success and we are excited for another season of monitoring.

Volunteers are asked to monitor a location on the lake for turtles a few times during the summer. Over 50 volunteers have been trained to date.

Training for new volunteers will be from 6-8 pm at the LGA office on Friday May 15th. To see volunteer photos and preliminary numbers from the last two summers, go online to [www.lakegeorgeassociation.org/ltmp.htm](http://www.lakegeorgeassociation.org/ltmp.htm)

## Be a Loon Monitor!

This program is part of an Adirondack-wide annual census run by the **Adirondack Cooperative Loon Program**. The LGA is coordinating volunteers for Lake George. All you have to

commit is 1 hour of your time - even the busiest people can do this one!

Shoreline all around the lake will be divided up for coverage during the census, which will be held on Saturday July 18th from 8-9 am. Sign up early to get a good section of shoreline and increase your chances of spotting a loon!

For questions about these programs or to sign up for training, please call Emily DeBolt at (518) 668-3558 or send an email to [edebolt@lakegeorgeassociation.org](mailto:edebolt@lakegeorgeassociation.org). ♦



Painted turtle. Photo by Sue Pierce.

## Make the protection of Lake George a part of your legacy...

**Join the LGA Today and Help Protect the Beauty & Vitality of Lake George for Years to Come!**

Name \_\_\_\_\_

Primary Address \_\_\_\_\_  
\_\_\_\_\_

Seasonal Address \_\_\_\_\_  
\_\_\_\_\_

Phone \_\_\_\_\_

Email Address \_\_\_\_\_

Yes! I would like to become an LGA Member: (Check Below)

\$10000       \$500       \$50 Individual

\$5000       \$250      (1 person only)

\$2500       \$150       \$25 Student

\$1000       \$100      (Under 18 only)

Payment type:

Check enclosed. (Please make checks payable to Lake George Association Inc.)      NWS 0509

Charge my credit card \$ \_\_\_\_\_

VISA/MC/AMEX # \_\_\_\_\_

Exp. Date \_\_\_\_\_ 3 digit CCV # \_\_\_\_\_

Signature \_\_\_\_\_

Please cut out and mail to: **Lake George Association, Inc.**

Or give on the web at **P.O. Box 408**

[www.lakegeorgeassociation.org](http://www.lakegeorgeassociation.org) **Lake George, NY 12845**

## Remember the LGA in your will with a gift and become a member of the Helen V. Froehlich Legacy Society...

A charitable bequest is one of the simplest ways to make a gift, and often at a level not possible during one's lifetime. A bequest can be made for a specific amount or a percentage of your estate. Your gift can consist of cash, securities, real estate, or personal property. It can be for general use or restricted for a specific program or service. This special gift truly reflects what is important to you.

The federal tax laws recognize that organizations like the LGA rely on generous private donations to continue our work. For this reason, the law permits a 100% charitable estate tax deduction when you make a bequest to the LGA in your will.

For more information on charitable bequests, please be sure to contact your tax advisor.

## Consider a donation of depreciated securities or stock... Turn a stock market loss into a WIN!

If you took a loss in the stock market, as the majority of us have, you can still help the LGA continue to protect Lake George! By selling the stock at a loss and then making a donation to the LGA of the same amount that the stock was sold for, you can do the following:

-- Claim a charitable deduction for the gift

-- Deduct the stock's decrease in value from your other income, thereby reducing the taxes you pay!

As always, it is recommended that you consult with your personal tax advisor or attorney.

All donations made to the LGA are charitable contributions that are tax deductible to the full extent allowed by law under the LGA's status as a 501(c)(3) organization.

Copies of the **LGA's Annual Report** are available upon request as well as on our website: [www.lakegeorgeassociation.org](http://www.lakegeorgeassociation.org)

Attention: Donations made through the LGA website are protected by Authorize.Net, a leader in the industry of secure online payment gateways.



**The Lake George Association, Inc.**  
P.O. Box 408 Lake George, NY 12845  
Phone: 518-668-3558 Fax: 518-668-4702  
info@lakegeorgeassociation.org

#### BOARD OF DIRECTORS

##### President

J. Buckley Bryan, Jr. (*Bolton Landing*)

##### Executive Vice President

Victor Hershaft (*Bolton Landing*)

##### Vice Presidents

Michael Dier (*Diamond Point*)

William Dutcher (*Pilot Knob*)

Karen Larkin (*Cleaverdale*)

##### Treasurer

Robert de Buys (*Hague*)

##### Secretary

Kenneth Engler, Jr. (*Hague*)

##### Directors

Rolly Allen (*Hague*)

Bruce Ashby (*Bolton Landing*)

Graham Bailey (*Hague*)

Dan Behan (*Saratoga Springs*)

Paul Curtis (*Glens Falls*)

Holly de Buys (*Hague*)

Matt Finley (*Bolton Landing*)

Michael Grasso (*Lake George*)

Catherine LaBombard (*Huletts Landing*)

Cheryl Lamb (*Bolton Landing*)

Peter Menzies (*Bolton Landing*)

John Schaninger (*Huletts Landing*)

##### Emeritus Board

Dr. Barbara Chick (*Queensbury*)

Alison Craig (*Hague*)

Buzz Lamb (*Bolton Landing*)

John Lynch (*Lake George*)

George Singer (*Ticonderoga*)

##### Advisory Board

George Beaudoin (*Hague*)

Keith Ferguson (*Bolton Landing*)

Ray Freud (*Putnam*)

William P. Gates (*Bolton Landing*)

Andrea Maranville (*Bolton Landing*)

Douglas Smith (*Hague*)

#### STAFF

##### Executive Director

C. Walter Lender

##### Director of Membership Development

Nancy Cobb-Zoll

##### Education & Outreach Coordinator

Emily M. DeBolt

##### Communications Coordinator

James Hood

##### Development Assistant

Jessica McTague

##### Project/GIS Manager

Randy G. Rath

##### Office Manager

Mona Seeger

##### Legal Counsel

Matthew Fuller

##### Committee Chairs

Development: Rolly Allen

Finance: Karen Larkin

Nominating: John Schaninger

Human Resources: Rolly Allen

Summer Event: Cheryl Lamb

Water Quality: Cathy LaBombard

Water Recreation: Mike Dier

*The Lake George Association, Inc.  
is a 501(c)(3) not-for-profit  
organization.*

*All donations are tax-deductible to  
the extent allowed by law.*

## Save these Dates!

### *LGA Annual Meeting*

Saturday, June 13th

The Lake George Club

### *LGA Summer Gala*

Friday, July 17th

The Inn at Erlowest

### *LGA Golf Tournament*

Monday, September 14th

Glens Falls Country Club

*(Note our new locations.)*

## Don't Flush Your Drugs!!

### Keep pharmaceuticals out of our waters!

Our waters are facing a serious environmental threat from pharmaceuticals. One of the biggest sources of introduction comes from household and institutions flushing unused drugs.

Typical wastewater treatment systems are not effective at treating and removing pharmaceuticals.

Tips for proper disposal of household prescriptions and over the counter drugs can be found on a new website launched by NYS DEC:

**[www.dontflushyourdrugs.net](http://www.dontflushyourdrugs.net)**

NONPROFIT ORGANIZATION  
U.S. POSTAGE PAID  
Lake George, NY 12845  
Permit No. 17

## Our Mission Statement

*"Working together  
to protect, conserve  
and improve the  
beauty and quality  
of the Lake George  
Basin."*



The Lake George Association, Inc.  
P.O. Box 408  
Lake George, NY 12845