



# Lake George Association

*People Protecting the Lake Since 1885*

December 22, 2009

## FOR IMMEDIATE RELEASE

### **Contact: Randy Rath**

Project Manager  
Lake George Association  
Phone: (518) 668-5595

### **LAKE GEORGE ASSOCIATION PLANNING STORMWATER IMPROVEMENTS FOR PUTNAM LAKEFRONT**

**Lake George, NY** – The Lake George Association (LGA) has announced a new planning project for the Town of Putnam on the northeast shores of Lake George. The LGA has just signed an agreement with the US Army Corps of Engineers (USACOE) to move forward with a stormwater planning project. The project will evaluate the current stormwater infrastructure in the Town of Putnam within the Lake George Watershed. “We’re looking at culverts, streams, roadside ditches, trenches, and direct flows from the road,” according to Randy Rath, LGA Project Manager. “Some of the existing infrastructure is just not adequate to handle the sediment and nutrient loading into the lake.”

The project will look at the Putnam lakefront communities of Gull Bay, Glenburnie, and Black Point Road. The following roadways will be included in the evaluation: County Route 1, Warrick Road, Lake George Way, Mosswood Way, Black Point Road, Gull Bay Road, Sagamore Road, Scherdtfeger Road, Beach Lane and Link Road (see attached map).

“Stormwater runoff has been identified as the primary source of nutrient, bacterial contaminant and pollutant loading to Lake George in several studies,” according to the workplan of the USACOE Project Agreement. Surface runoff contributes 83% of the phosphorous loading to the lake. Stormwater collection is mostly directed into the lake and not contained or slowed by any method. The project locations include areas of steep terrain, narrow road crossings, almost no road shoulders, and clay soils, all of which present challenges to managing stormwater runoff.

“The project will start with documenting the existing stormwater infrastructure followed by a limited hydrologic analysis on the identified sites that need improvement,” according to the LGA’s Randy Rath. “The identified stormwater sites will be prioritized and recommendations will be made. There is concern about the beaver dam that is located in the Glenburnie area and it will receive a full evaluation for a catastrophic dam failure. The analysis will provide any associated impacts for that scenario.”

Lake George Association ♦ P.O. Box 408 ♦ Lake George, NY 12845  
(518) 668-3558 ♦ Fax (518) 668-4702 ♦ [www.lakegeorgeassociation.org](http://www.lakegeorgeassociation.org)

The project is part of the USACOE Planning Assistance for States Program and is a 50/50 match program. The USACOE is providing \$65,000 for this project. “The LGA is contributing the cash match of \$30,000 toward the project and will be adding, along with the Town of Putnam, \$35,000 in in-kind services to complete the local match for the planning grant,” according to LGA Executive Director Walt Lender. “We feel that there are many opportunities to improve the stormwater infrastructure along the lake in Putnam and other communities.”

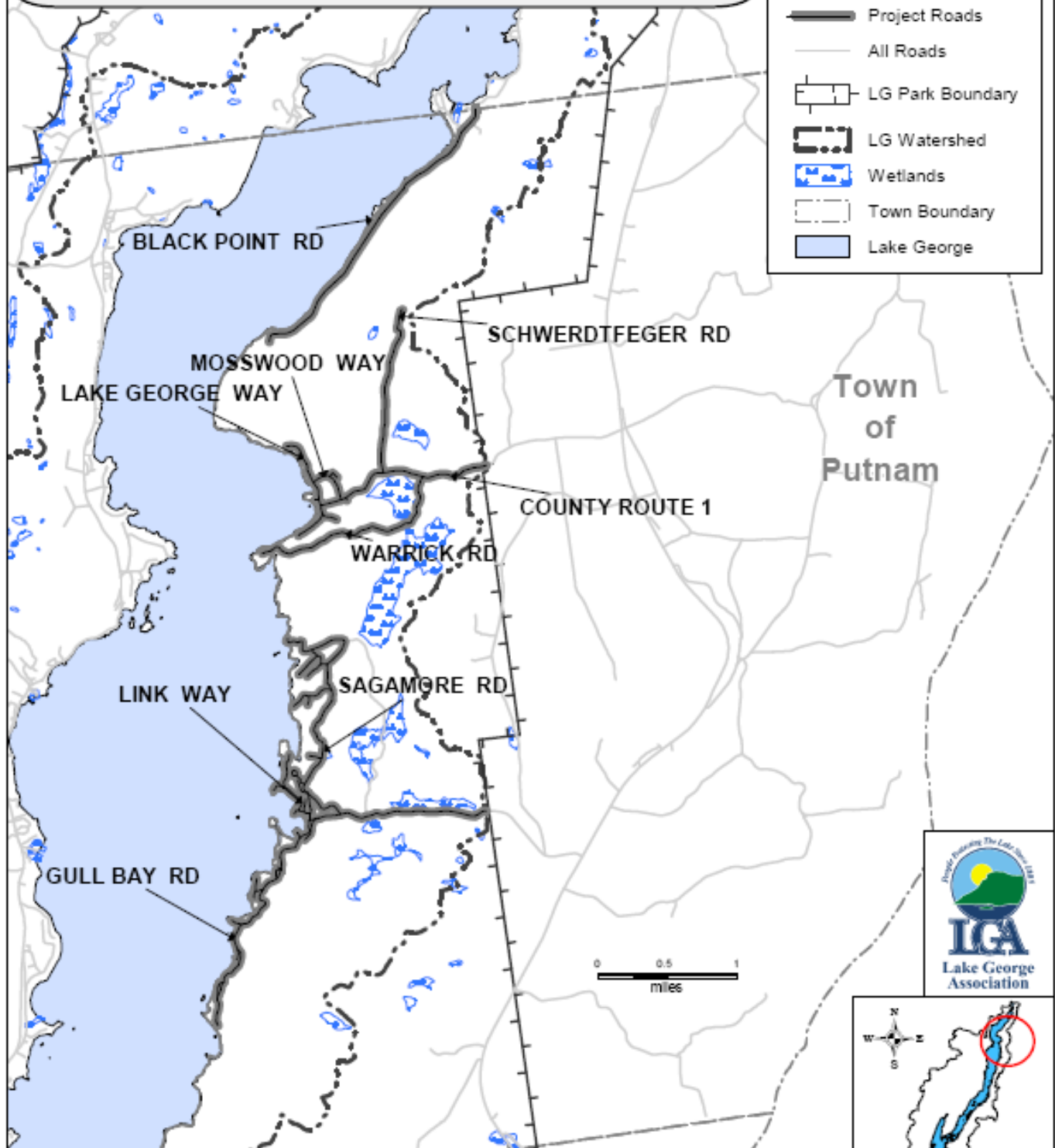
“Rural communities like Putnam just have not had the resources available to them to identify and fix many stormwater hot spots. We hope this program will be one of many which will provide assistance to our local governments and help them protect Lake George,” continued Lender.

The LGA’s in-kind services will include collecting all available geographic data (digital GIS data) and the physical collection and analysis of points in the Gull Bay area.

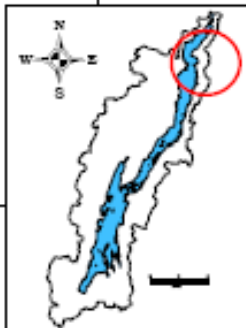
The planning project should be completed by the end of 2011. The final recommendations generated from the stormwater investigation will be used to put together a request for technical assistance from the Watershed Environmental Assistance Program. The Watershed Environmental Assistance Program operates via the Lake Champlain Basin Program in cooperation with the USACOE. If accepted as a viable project, it will receive 65% federal funding with a 35% local match.

The LGA is a not-for-profit membership organization of people interested in working together to protect, conserve, and improve the beauty and quality of the Lake George Basin. For more information, contact the LGA at (518) 668-3558 or check out LGA on the web at [www.lakegeorgeassociation.org](http://www.lakegeorgeassociation.org).

# Putnam Stormwater Planning Project



- Legend**
- Project Roads
  - All Roads
  - LG Park Boundary
  - LG Watershed
  - Wetlands
  - Town Boundary
  - Lake George



*"Working together to protect, conserve and improve the beauty and quality of the Lake George Basin."*  
 Lake George Association - Since 1885

\*This map was prepared for the New York State Department of State with funds provided under Title 11 of the Environmental Protection Fund and grants from the Helen V. Froehlich Foundation.\*  
 Copyright Lake George Association 2009

IMPORTANT NOTICE AND DISCLAIMER: MAP AND INFORMATION PROVIDED "AS IS". The Lake George Association cannot accept any responsibility for errors or omissions. There are no warranties, expressed or implied, including warranties of title and non-infringement that accompany this product. However, notification of any errors is appreciated.  
 Map created on 12/21/2009 Workspace/ltp