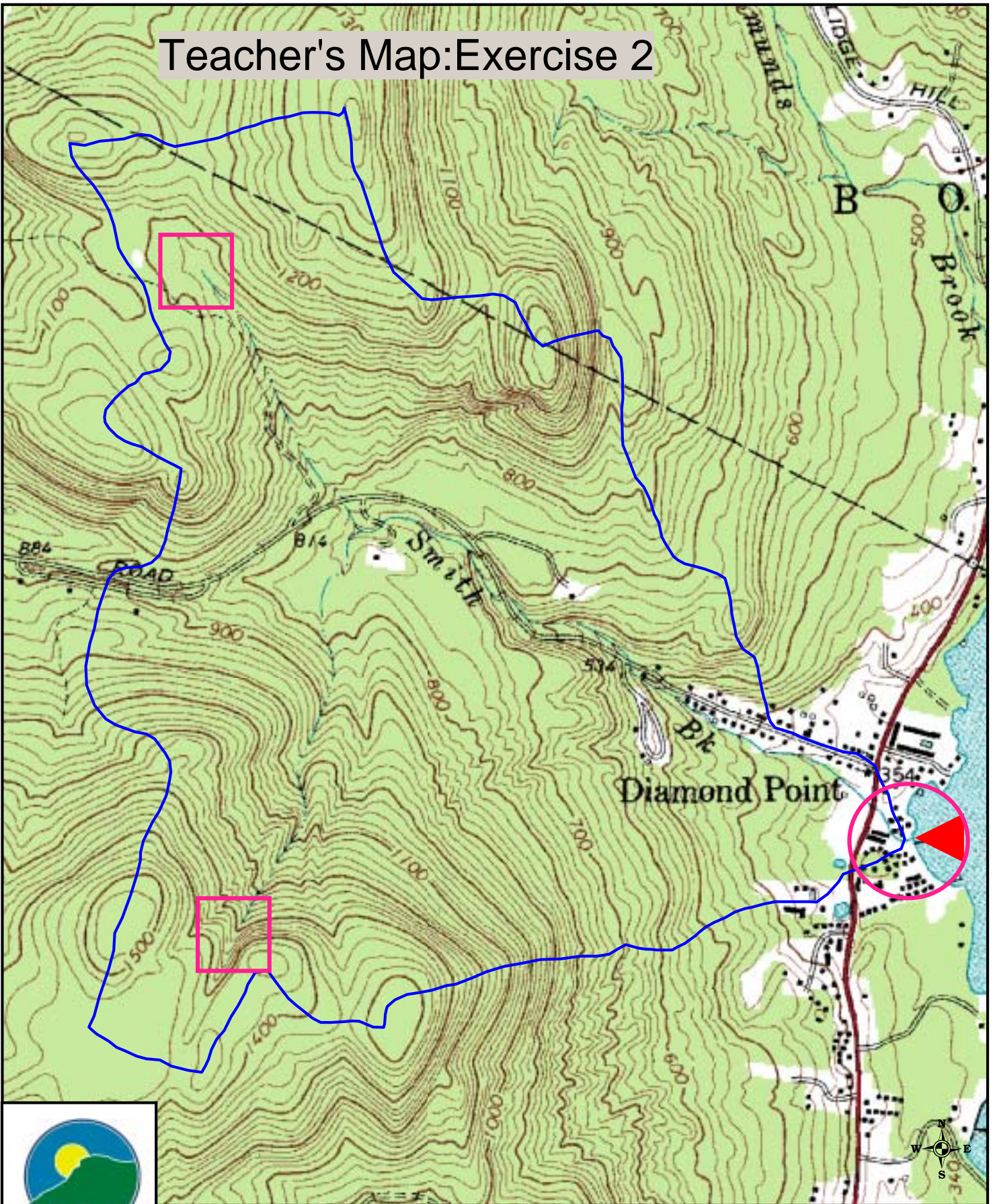


Teacher's Map: Exercise 2



*"Working together to protect, conserve,
and improve the beauty and quality
of the Lake George Basin."*

"This map was prepared for the New York State Department of State with funds provided under Title 11 of the Environmental Protection Fund and grants from the Helen V. Froehlich Foundation."
Copyright Lake George Association 2006

IMPORTANT NOTICE AND DISCLAIMER
MAP AND INFORMATION PROVIDED "AS IS". The Lake George Association cannot accept any responsibility for errors or omissions. There are no warranties, expressed or implied, including warranties of title and non-infringement that accompany this product. However, notification of any errors is appreciated.

Map created on 2/21/2006 Workspace/education/empact